



**NEWBUILD
WELL INTERVENTION VESSEL(WIV)**

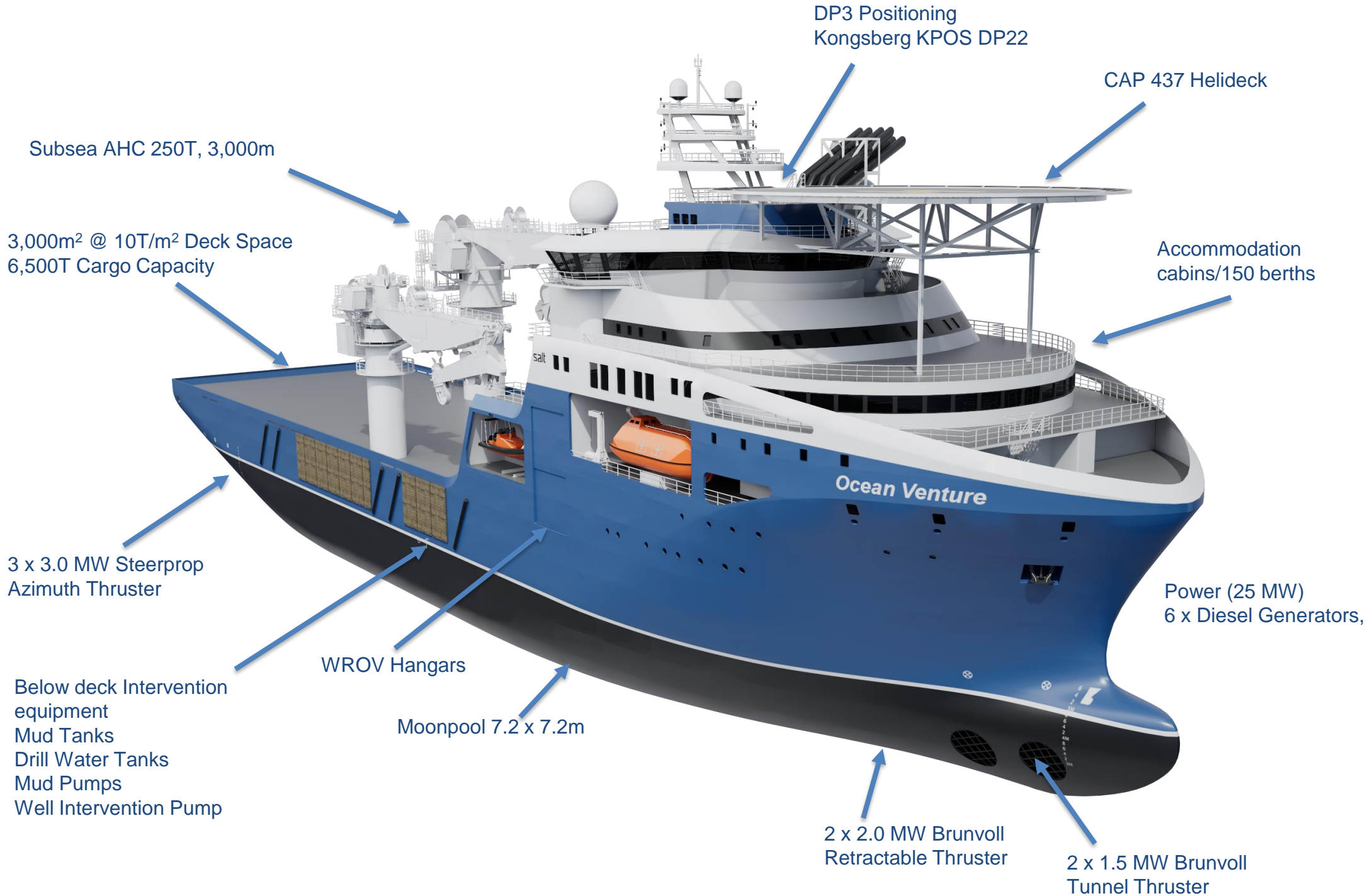
FTAI Ocean Presentation

Disclaimer

This presentation (the "Presentation") has been prepared by FTAI Ocean (the "Company" and together with its subsidiaries the "Group") for information purposes. This Presentation does not constitute an offer to sell or a solicitation of an offer to buy, or a recommendation regarding, any shares or other securities of the Company. The distribution of this Presentation may be restricted by law in certain jurisdictions and persons into whose possession this Presentation comes should inform themselves about, and observe, any such restriction.

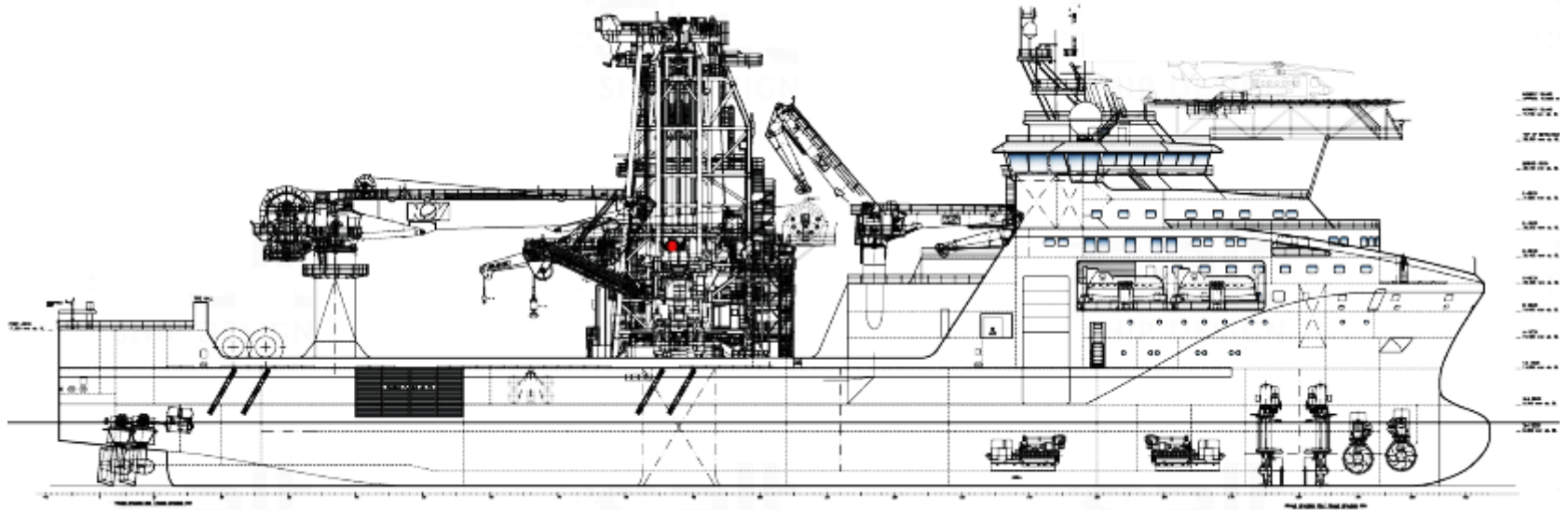
This Presentation contains certain forward-looking statements relating to the business, financial performance and results of the Group and/or the industry in which it operates. Forward-looking statements concern future circumstances and results and other statements that are not historical facts, sometimes identified by the words "believes", "expects", "predicts", "intends", "projects", "plans", "estimates", "aims", "foresees", "anticipates", "targets", "will", "should", "may", "continue" and similar expressions. The forward-looking statements contained in this Presentation, including opinions and views of the Company or cited from third party sources, are based on various assumptions. The forward-looking statements are solely opinions and forecasts and are subject to risks and uncertainties which are difficult or impossible to predict and are beyond the Company's control. Forward-looking statements are not guarantees of future performance, and risks, uncertainties and other factors could cause the actual results of operations, financial condition and liquidity of the Group or the industry to differ materially from the expectations expressed or implied in this Presentation by such forward-looking statements. You are cautioned not to place any undue importance on any forward-looking statement.

The information in this Presentation is current as of the date hereof and is subject to change. The Company and its representatives are under no obligation to update or keep current the information contained in this Presentation. This Presentation does not constitute an offer to sell, a solicitation of an offer to buy, or a recommendation regarding, any shares or other securities of the Company, nor shall it or any part of it form the basis of or be relied on in connection with any contract or commitment whatsoever. In particular, the information within this Presentation must not be used in making any investment decision. This Presentation does not purport to contain a complete description of the Group or the markets in which the Group operates. No representation or warranty, express or implied, is made as to the accuracy or completeness of any information contained in this Presentation, and it should not be relied upon as such. None of the Company, its advisers or any of their respective affiliates or representatives shall have any liability arising directly or indirectly from the use of this Presentation or its contents or otherwise arising in connection with this Presentation.



MAIN DATA

Year Delivered	2027
Flag	Singapore
Length Overall	157.0m
Breadth	31.0m
Draught	7.50m
Gross Tonnage	12,500
Transit Speed	15 kts
Deck Space	3,000 m ² @ 10t/m ²
Cargo Capacity	6,500T
Office Space	Office & Conference Rooms
Hospital	Fully Equipped
Helideck	13 t, 22.2m dia. / designed for S92
DNV Notations	1A, Ship-Shaped Well Intervention Unit (2), MODU, Clean, COMF (C-3, V-3), Crane, DK(+), DYNPOS (AUTRO), E0, HELDK (S,H), Ice (C) SF



ACCOMMODATION

Total Configuration	150 Personnel in comfort class 50 x 1-person cabins 50 x 2-person cabins
Facilities	2 x Large Project Offices overlooking main deck 1 x dedicated TV Room 52 seats, 1 x Sauna 1 x dedicated conference room 1 x dedicated hospital facility

LIFE SAVING EQUIPMENT

Lifeboats (Tanker-Type)	2 x 150 persons
Rescue Fast Craft (FRC)	4 x 16 persons

POWER AND PROPULSION

Main Engines	6 x Diesel Generator 25MW
Main Generator	Wartsila
Installed Power	690V/450V/230V 60HZ
Main Propulsion	Steerprop azimuth, 3 x 3.0MW
Tunnel Thruster	Brunvoll, 2 x 1.5 MW
Azimuth Thruster	Brunvoll 2 x 2.0 MW

DYNAMIC POSITIONING

DP Classification	DP-3
DP System	Kongsberg Maritime KPOS DP22
Reference Systems:	2 x C-NAV X3 Posn Ref 1 x FanBeam 4.2 MDL (2 x 6 Way Prism; 3 Tube Reflectors) 1 x Radius 1000 Interrogator, 4 x Radius 700 Transponders 2 x Kongsberg HIPAP 502 Position Reference Systems 3 x MRU5 Kongsberg Seatex Motion Reference Units 3 x Sperry Marine Navigat X MK1 Digital Gyrocompass 3 x Kongsberg OMC 139D Wind Display 3 x Gill Instruments Wind Observer II Ultrasonic Anemometer

ROV HANGARS AND FACILITIES

Number of Hangars	1 x port & 1 x starboard
ROV Types	Work Class WROVs
Control Room	Dedicated control room on A-deck
Office	Dedicated ROV office on A-deck

MAIN SUBSEA CRANE

Maker	National Oilwell Varco
Type Wire	Knuckle-boom-Active Heave Compensated
Length	3,000 m
Capacity	Harbour Deck Lift 250 Te @ 14 m Subsea Lift 250 Te @ 12 m Aux Winch 20 Te @ 40 m Man riding 1 Te @ 40 m

OFFSHORE CRANE

Maker	National Oilwell Varco
Type	1 x Knuckle-boom crane
Capacity	60 Te @ 18m single fall

SMART TOWER SYSTEM



A versatile integrated P&A and Intervention Tower with Deck Spread design for maximum operational flexibility, even in the harshest climates. The dual level Rooster Box and underslung elevator or spool interface provides easy access and a universal platform for surface pressure equipment, AHC Slickline and E-line Operations and building/operation/recovery of CWOR and intervention systems.

Tower

Ram Rig hoisting system with inline AHC & PHC

Water Depth	80m - 1500m
Rooster Box SWL	250t
Environment	Operational Hs 5m -20 to +45°C

Certified to	DNVGL-OS-E101
Subsea Package	Multi-level maintenance garage
Garage	Max Height - 12.3m

Riserless WL	Multi-level
Lubricator	maintenance stand

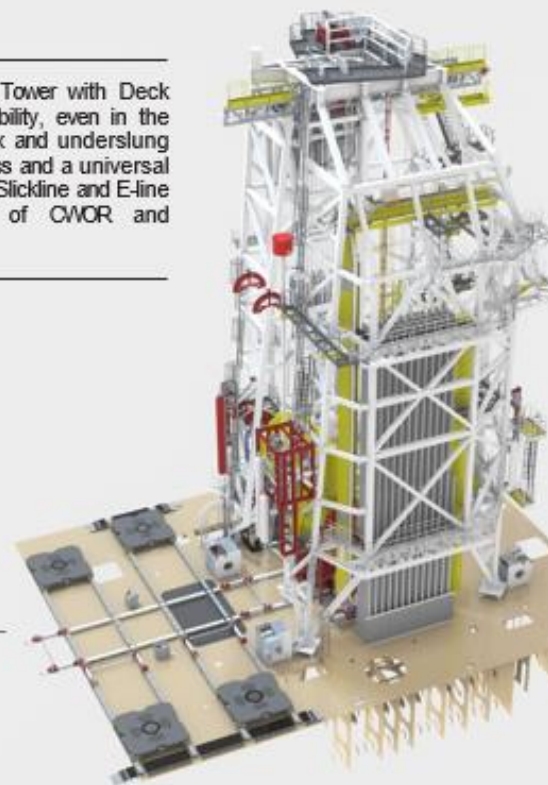
Control System

- Integrated control cabin
- Operator Chair
- Siemens PLC with distributed network
- Interface with vessel safety systems
- Interface to vessel CCTV

Vertical Racking System

Touch button semi-automatic loading to and from rack to well centre of conventional threaded drill floor casing riser or specialist collet connector CWOR

Capacity	55 x 90ft bays 5 x 90ft quarantine bays 5 x single bays
Feedback	Fingerboard latch Sensors handling arm Sensors Integrated CCTV



Guide & Pod Wire Systems

4 off Guide-wire Winches & 2 off Pod-wire Winches with inline PHC cylinders

Guide Wire SWL	5t - tension at well
PodWire SWL	10t - tension at well
Drum capacity	1600m

VESSEL CAPACITIES

MGO (85%)	3,000 m ³
Potable Water System	1000 m ³
Technical Freshwater	6,924 m ³
Water Ballast	8,800 m ³
Lube Oil	90 m ³

DECK PALLET SYSTEM

Pallet size	4m x 4m
Rating	SWL 120T / pallet

TANKS & PUMPS

BRINE Tanks	1,000m ³
Meg storage	500m ³
Drill Water/ Industrial Water	6,000m ³
Methanol	300m ³
Cement tanks	2x 15m ³

WELL TEST

Flare Boom	Optional
Well Test	Optional
MudTank/Pump	Optional

MOONPOOL

Dimensions	7.2 m x 7.2 m
Hatches	Welded and flush

PERFORMANCE

Transit (Eco)	10.5 knots
Transit	12 knots
Maximum	16.5 knots

FUEL CONSUMPTION (Est.)

Dock	5 m ³ / day
Alongside	7 m ³ / day
Eco Transit	23 m ³ / day
Transit	26 m ³
DP3 Mode	18-22 m ³





**NEWBUILD
WELL INTERVENTION VESSEL(WIV)**

FTAI Ocean Presentation
Singapore Q4 2024