

The M/V PIONEER is a Dynamically Positioned (DP-2) offshore subsea support vessel, well equipped for offshore construction, ROV, Diving, Survey and geotechnical support roles. Built in 2011, the DNV classed vessel is fully SPS compliant, with an overall length of 82 meters and breadth of 20m and provides over 700m<sup>2</sup> of clear deck space, 150sqm of mezzanine deck and over 1,000mt of cargo carrying capacity. The PIONEER is equipped with a 50-ton subsea crane, and capable of plumbing to water depth of 1,000m and is configured with accommodation and facilities for up to 120 people, inclusive of marine crew.

The PIONEER is fitted with a Kongsberg KPOS Dynamic Positioning System (DP2). The DP system is supported by a HiPap 502 positioning system and additional position reference systems including taut wire that support manned diving operations. The PIONEER is equipped with a Helideck suitable for Sikorsky 92 and is fitted with a 5.4m x 5.2m moon-pool. Dedicated hospital and project office facilities are available onboard.

The PIONEER has a solid track record, reliable and proven work history.



## ASIA PACIFIC

Contact: Jon Attenburrow  
Email: [JAttenburrow@FTAloffshore.com](mailto:JAttenburrow@FTAloffshore.com)  
Mobile: +65 97526210

**Safe and Professional**

[www.ftaiocean.com](http://www.ftaiocean.com)

## MAIN DATA

IMO Number	9594169
Call Sign	9V3761
Year Built	2011
Flag	Singapore
Length Overall	82.20 m
Length Waterline	81.90 m
Breadth Moulded	20.40 m
Draught Moulded	5.50 m
Depth Moulded	7.00 m
GRT / NRT	4,399 / 1,319
Class	DNV
Deck Space	700 m <sup>2</sup>
Office Space	2 x Office
Hospital	Fully Equipped
Helideck	Aluminium type, suitable for Sikorsky S92 22.2 m. Max load: 12.8 tons
Notation	+A1(E) Offshore Support Vessel +AMS +DPS-2 SPS 2008 Compliant

## ACCOMMODATION (COMFORT CLASS)

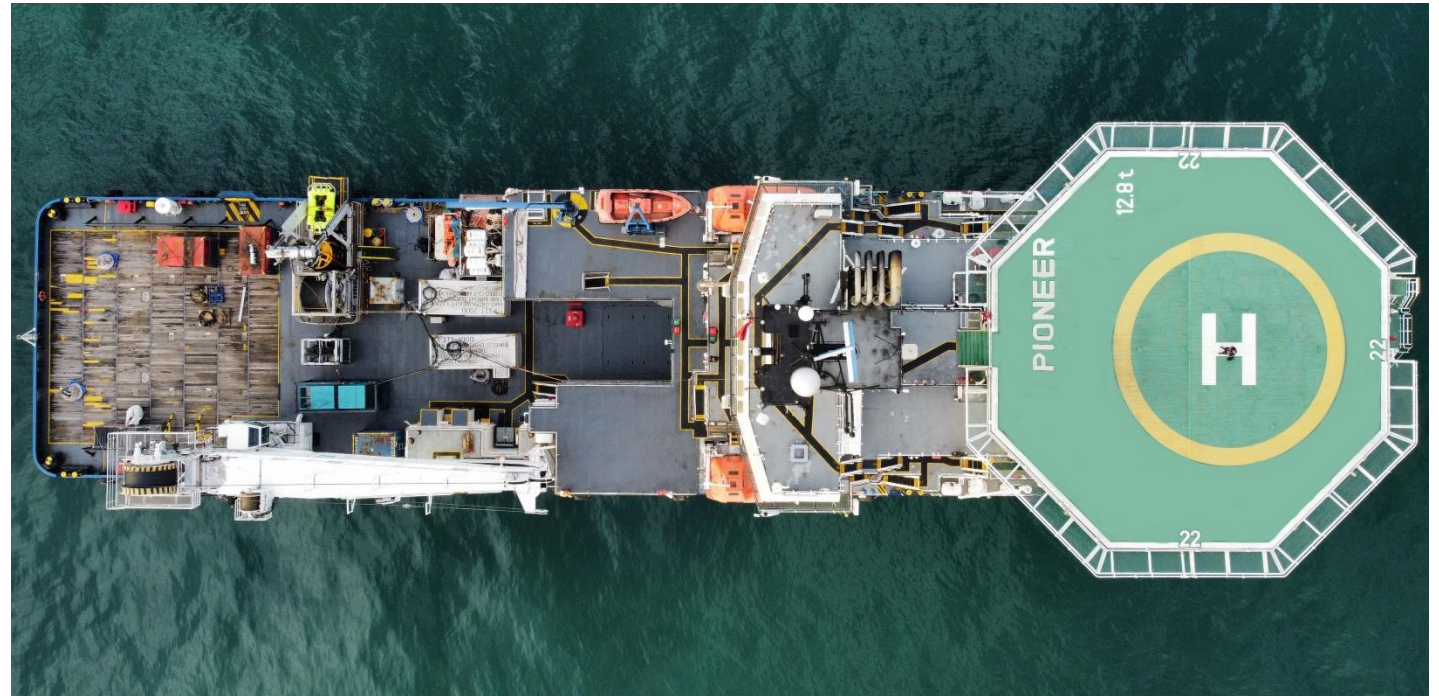
Total	120 Personnel
Configuration	8 x 1 berths 8 x 2 berths 24 x 4 berths
Facilities	2 x Large Project Offices 1 x dedicated TV Room, 1 x Cinema 1 x dedicated conference room 1 x dedicated hospital facility 1 x fully equipped gymnasium 1 x prayer room

## LIFE SAVING EQUIPMENT

Lifeboats (enclosed)	SOLAS, 2 x 60 men
Life Rafts (DL)	SOLAS, 2 x 16 men
Fast Rescue Boat	Water jet, 1 x 15 men c/w 160hp

## INTERCOMMUNICATION SYSTEM

PA Talkback System  
Integrated Telephone System  
Self-Powered Telephone



## RADIO AND NAVIGATION EQUIPMENT

GMDSS Furuno RC-1800T (Area 3)

## FIRE SUPPRESSION SYSTEM

Fixed Fire Extinguishing CO2 System in Engine Room  
Local Water Mist Fire Fighting System in Engine Room  
Fire Detection & Alarm System  
Water Sprinkler & Foam System for Helideck

## FUEL CONSUMPTION (approx.)

Standby/Alongside	2.5 m <sup>3</sup> / day
DP2 Mode	12 m <sup>3</sup> / day
Transit @ 9 knots	12 m <sup>3</sup> / day
Transit @ 11 knots	15 m <sup>3</sup> / day

## POWER AND PROPULSION

Main Engines	2 x 2,206kW at 750rpm, Niigata 8L28 HX
Main Propulsion	2 x Niigata ZP-41 CP stern steerable thrusters
Shaft Alternators	Main Engine front PTO, 1,000kW 440V/3pH.60Hz @ 0.8 P.F., 1,800rpm
Main Generators	4 x 910kW Caterpillar 3508B DITA with Stamford Alternator 440V/3pH.60Hz @0.8 P.F., 1,800rpm
Emergency Generator	1 x 350kW Caterpillar 3412C with Stamford alternator 440V/3pH.60Hz @ 0.8 P.F., 1,800rpm
Bow Thruster	3 x 680kW electric-driven Kawasaki KT-88B3 Double skin tunnel thruster, CPP, abt. 10.5t thrust each

## DYNAMIC POSITIONING

DP Classification	DP-2
DP System	Kongsberg Maritime KPOS DP 21 Independent C-Joystick System
Reference Systems:	1 x HiPAP 500, 1 x Laser Cyscan 1 x Radius, 2 x DGPS Taut wire system (500m)

## CARGO CAPACITY

Deadweight	3,056 tons, approx. at 5.50 m draught
Deck Cargo	1,000 tons, approx.
Deck Strength	10.0t / m <sup>2</sup>
Main Deck Area	700 m <sup>2</sup>
Mezzanine Area	150 m <sup>2</sup>
Fuel Oil	800 m <sup>3</sup> (680 m <sup>3</sup> )
Fresh Water	800 m <sup>3</sup> , approx.
Ballast	1,700 m <sup>3</sup> , approx.
Freezer / Chiller	50 m <sup>3</sup> / 47 m <sup>3</sup>

## CARGO PUMPS

Fuel Oil	1 x 100 m <sup>3</sup> / h at 75 m head, Azcue
Freshwater	1 x 100 m <sup>3</sup> / h at 75 m head, Azcue

## MOONPOOL

Approx. 5.4 m x 5.2 m
Damping swash
Bulkheads fore & aft & air vents
Moonpool is open bottom with removable / deployable Moonpool plug

## DECK EQUIPMENT

Anchor Windlass & Mooring Winch	1 x electro hydraulic, Mentrade
Drum	200 m x dia 40 mm
Drum Pull	5T x 10 m / min
Gypsies	For 054 mm U2 rated pull 13T at 0-9 m / min
Warping Drum	400 mm
Anchors	2 x 2,835 kg high holding power
Chains	522.5 m (L) x 054 mm U2
Capstan	2 x 5T @ 15 m / min electro hydraulic
Deck Crane Main	Electro-hydraulic knuckle boom, main boom lifting capacity 50T @ 5 m-12 m / 20T @ 30 m (DAF 1.6) TTS GPCKO 2000-5-30
Deck Crane Auxiliary	Electro-hydraulic telescopic, Palfinger 5.9T @ 1.7 m-6.9 m / 2.2T @ 12.2 m

## MISCELLANEOUS

Search Lights	3 x 2,000kW
Flood Lights	5 x 1,000kW
Water Maker	2 x 30 m <sup>3</sup> / day reverse osmosis type
Oily Water Separator	1 x 1 m <sup>3</sup> / h DBZ
Sewage Treatment Plant	1 120 men EVAC STP 125C
Incinerator	1 x 500 kcal / h cap, sludge oil burning 65 l / h

